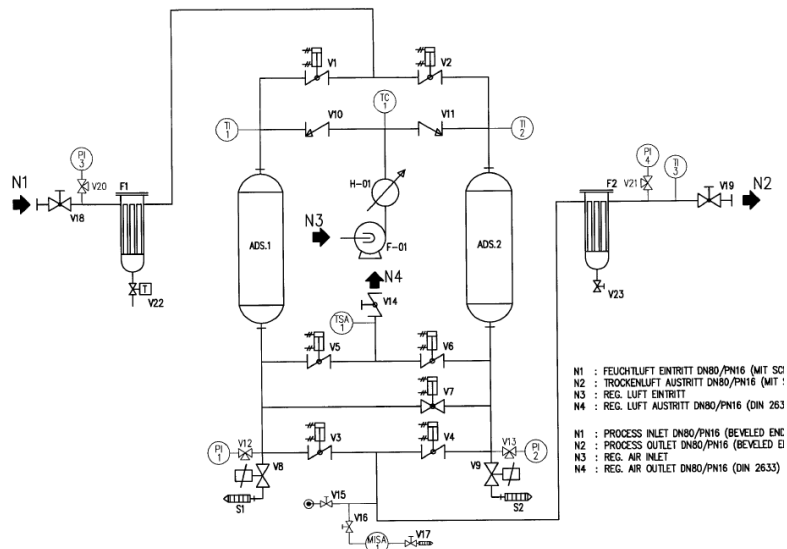


RENTAL SPECIFICATION DB24-400-25
Regenerating desiccant dryer

- External-heat regeneration system
- No loss of compressed air for regeneration or cooling
- Pressure drop lower than 0.1 bar at full capacity
- Sophisticated PLC control and communication unit
- Parallel drying phase for steady dewpoint performance



Make	Delair
Base model	DB24
Capacity*	28 m ³ /min (1.675 m ³ /h – 990 cfm)
Working pressure	4 - 10 Bar Bar(g) – (60 - 140 PSI (G))
Min/Max. inlet temp.	+5° to +40° C
Pressure dew point	-20 ° to -40° C
Discharge connection	DN80-PN16
Voltage	400 V, 3 Ph, 50 Hz
Absorbed power	32 kW (@ 50 Hz)
Gross weight	2.100 kg
Dimensions	2.3 x 1.75 x 2.95 m
Sound pressure	72 dB(A) (EN ISO 2151:2004), during blow-off 85 dB(A)

Machine is equipped with Pre and after (dust) filter.

*Conditions: Working Pressure 7 Bar(g), 35°C inlet temp., ambient temp 25°C

For other operating conditions or special conditions please contact RTC Group BV

Optional equipment:

- *Pressure reduction
- *Air receiver tanks
- *Alternative power supply
- *Hoses and cables
- *Air Compressors
- *Booster compressor

*** LAST PAGE ***